



Yio Chu Kang Secondary School



Secondary 1 ***Parent - Teacher Meeting*** ***12 January 2024 (Friday)***

Agenda for Parent Teacher Meeting

Agenda	Speakers
Opening Address by Principal	Mrs Betty Lim (Principal)
<u>Overview of Secondary School Education</u> <ul style="list-style-type: none">• Full Subject Based Banding	Ms Alicia Lock (HOD Science)
<ul style="list-style-type: none">• Student Development & Support	Mr David Goh (HOD Student Management)
<ul style="list-style-type: none">• Assessment Policy, ALP, LLP, Outdoor Adventure Cohort Camp & Parents Engagement	Ms Kelly Cho (Year Head Lower Sec)
<ul style="list-style-type: none">• Co-Curricular Activities	Ms Irene Heng (HOD PE & CCA)
YCKSS Digital Education Programme Briefing & Purchase of Personal Learning Device	Mr Brandon Chin (HOD ICT)
Meet the Form Teachers in the Sec 1 Classrooms	Form Teachers



Welcome Address

Mrs Betty Chow

Principal

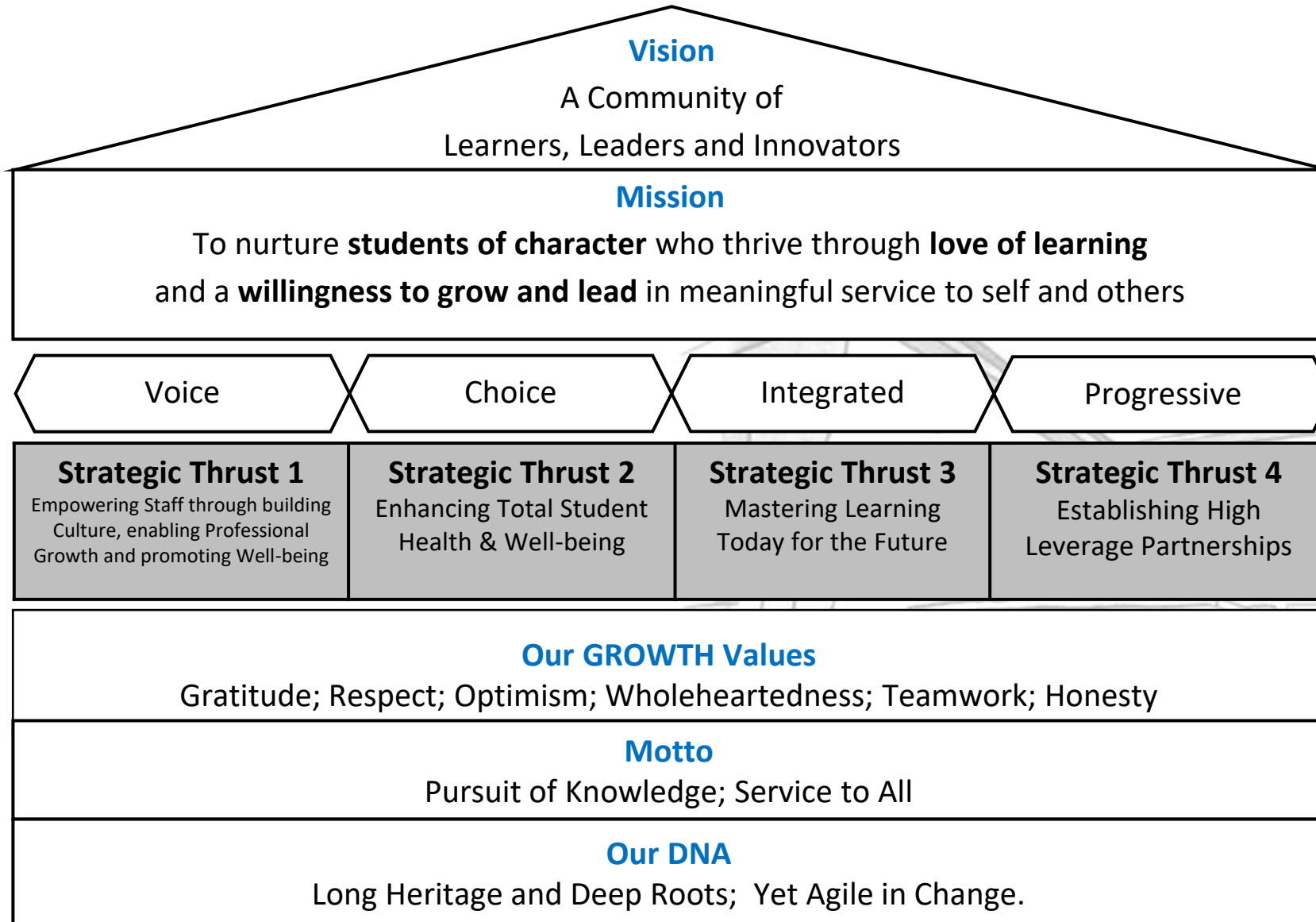


Yio Chu Kang Secondary School

崇文中学



Our YCKSS Compass





Future-Ready



Begins Now

SCHOOL THEME 2024

Future-Ready Begins Now

The Future of Learning is here at YCKSS!

With the relentless pace of technological advancement, we need to develop digital literacy and technological skills, and yet sharpen their uniquely human skills that cannot be replaced by technology.

We must be **discerning**, to be equipped to guard against being misled or manipulated by misinformation, and against the negative impact of technology on mental and social well-being. To thrive in multi-cultural, cross-disciplinary settings, we must be **sensitive** and **balanced** towards diverse perspectives; be **resilient, innovative,** and **adaptable** as we navigate disruptions and new frontiers.



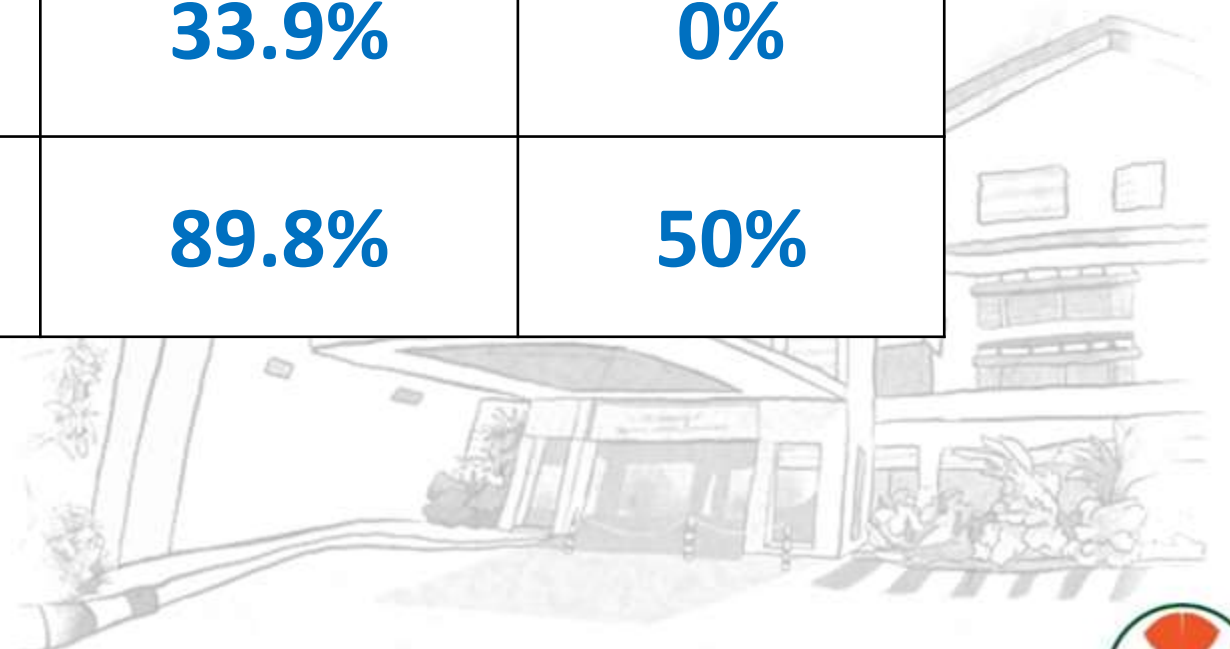
National Exam Results 2023

'N' Level Exams	4 NA 2023	4 NT 2023
Eligibility for 5NA	55.6%	-
Eligibility for Direct Poly Prog (DPP) via ITE	40.3%	-
Eligibility for Nitec	-	87.2%



National Exam Results 2023

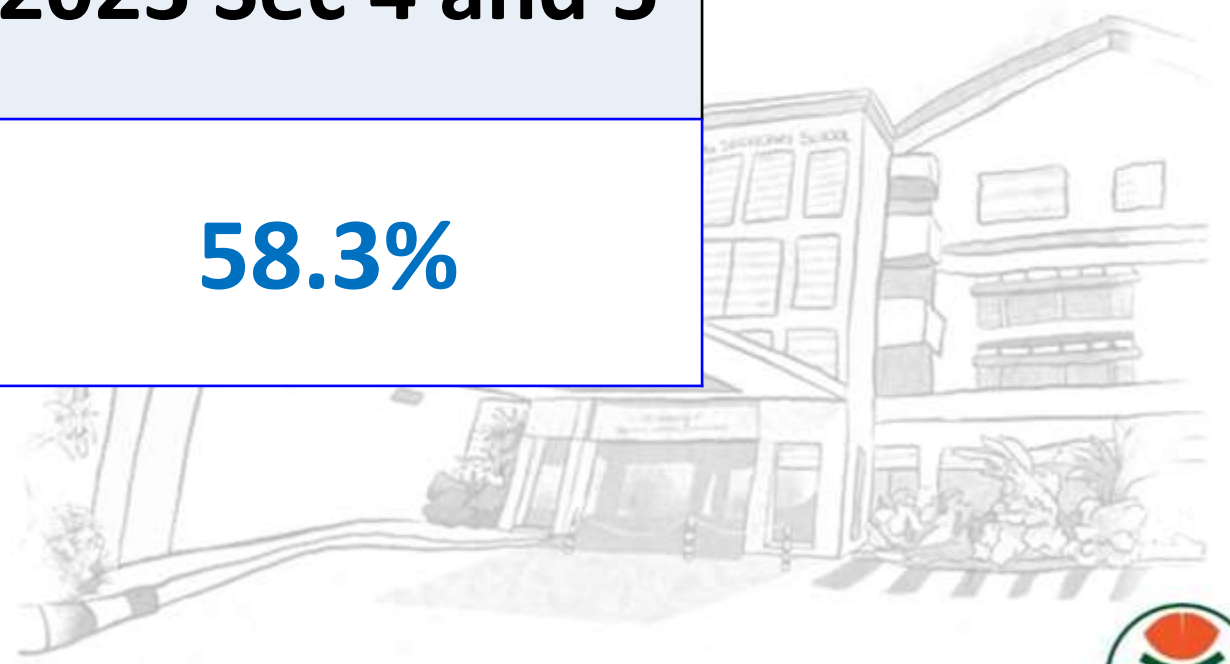
'O' Level Exams	4 Exp 2023	5 NA 2023
Eligibility for JC	33.9%	0%
Eligibility for Poly	89.8%	50%



Graduation CCA Certificate

demonstrating Attitude, Character & Learning

CCA GRADE	2023 Sec 4 and 5
EXCELLENT	58.3%



Showing Your Development Journey



School Graduation Certificate
and Testimonial

- Academic Record
- CCA Record
- Attendance Record
- Conduct Record
- Other experiences and enrichment activities (e.g. VIA)



SEC 1 ORIENTATION 2024



A WARM WELCOME



TO THE YCKSS FAMILY!

SEC 1 ORIENTATION

YCKSS AMAZING QUEST



**PAST THE PRESENT
TO THE FUTURE**



**BUILDING
TEAMWORK**



**OVERCOMING
CHALLENGES**



GROWTH MINDSET MENTAL RESILIENCE





Overview of Secondary Education

Full Subject-Based Banding

Ms Alicia Lock

HOD Science





What is Full Subject-Based Banding? (Full SBB)

What is Full Subject-Based Banding?



Nurture the joy of learning and develop multiple pathways to cater to the different strengths and interests of our students.

A secondary school education where students learn each subject at the level that best caters to their overall **strengths, interests and learning needs.**



Under Full SBB, students will be in **mixed form classes** where they can interact with peers of different strengths and interests.



Eligibility to take subjects at a more demanding level

At the Start Of Secondary 1

Indicative Level of Most Subjects at Start of S1	PSLE Standard Grade	PSLE Foundation Grade	Option to offer subject at
G1	AL 5 or better	-	G3 / G2
	AL 6	AL A	G2
G2	AL 5 or better	-	G3



Full Subject-Based Banding (Full SBB) Scenario

Example: Student A

- Posted to Posting Group 2
- Scored **AL 5** for Math & Science in PSLE



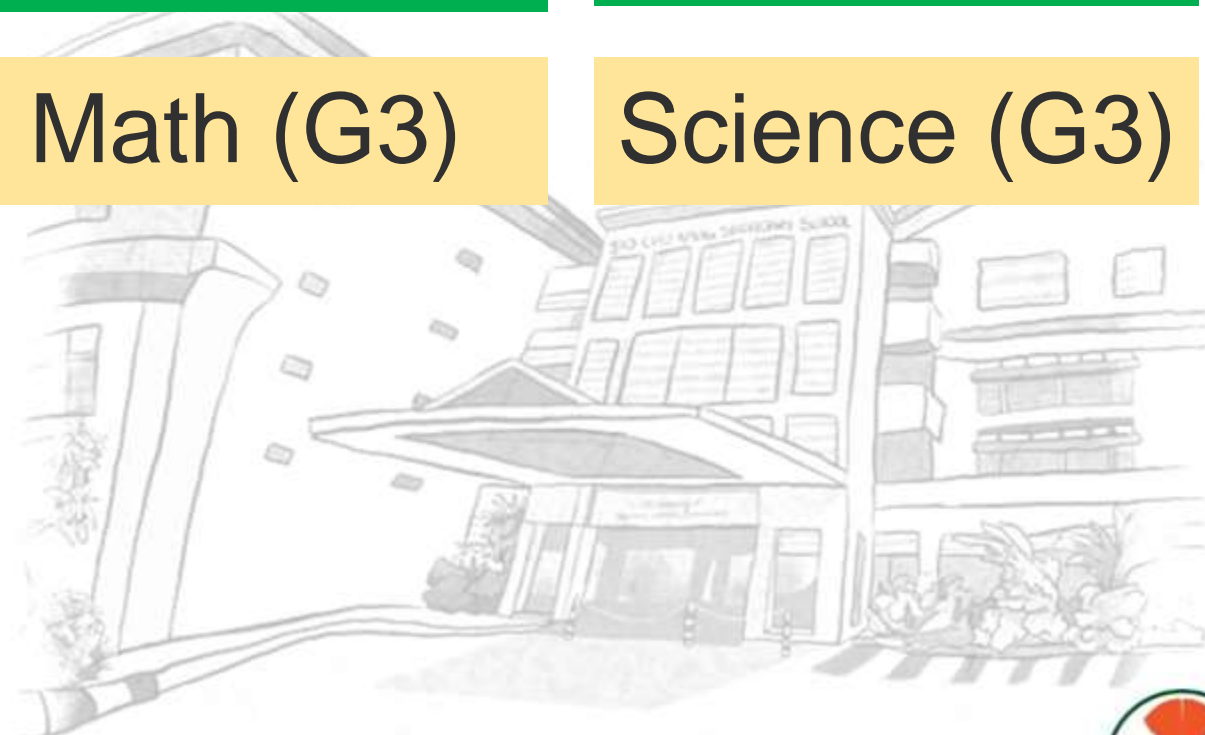
Subject-Based Banding (Secondary)

English (G2)

MTL (G2)

Math (G3)

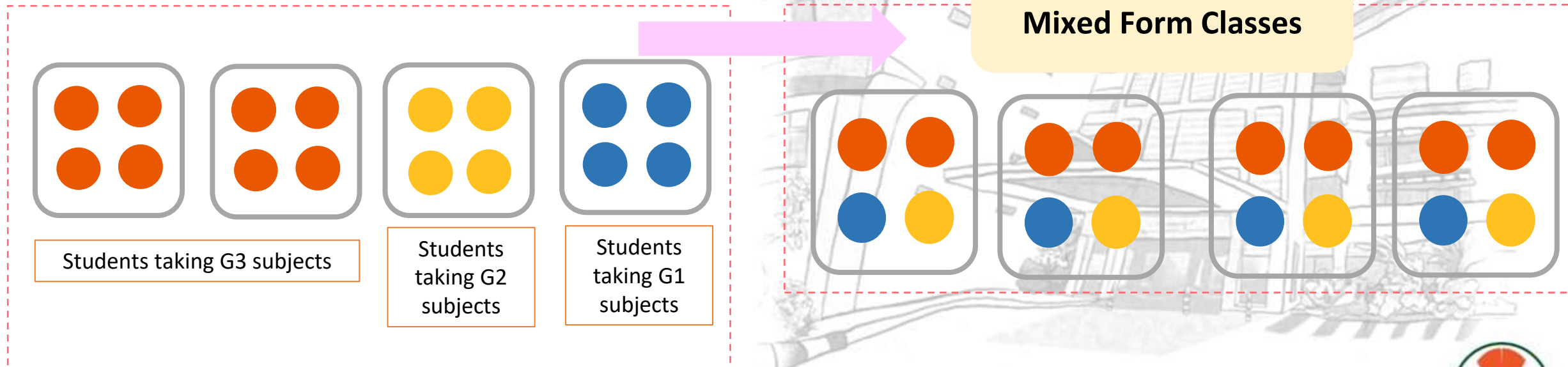
Science (G3)



Mixed Form Classes

Mixed Form Classes enables students from different backgrounds to build meaningful friendships and learn to value different perspectives.

Illustrative Example:



Subjects at Lower secondary – Common Curriculum

Students will spend around one-third of their curriculum time taking a set of six common curriculum subjects:



Subjects Offered at G1, G2 and G3 level

English Language, Mother Tongue Languages, Mathematics, Science, and Humanities subjects will be offered at G1, G2 and G3.

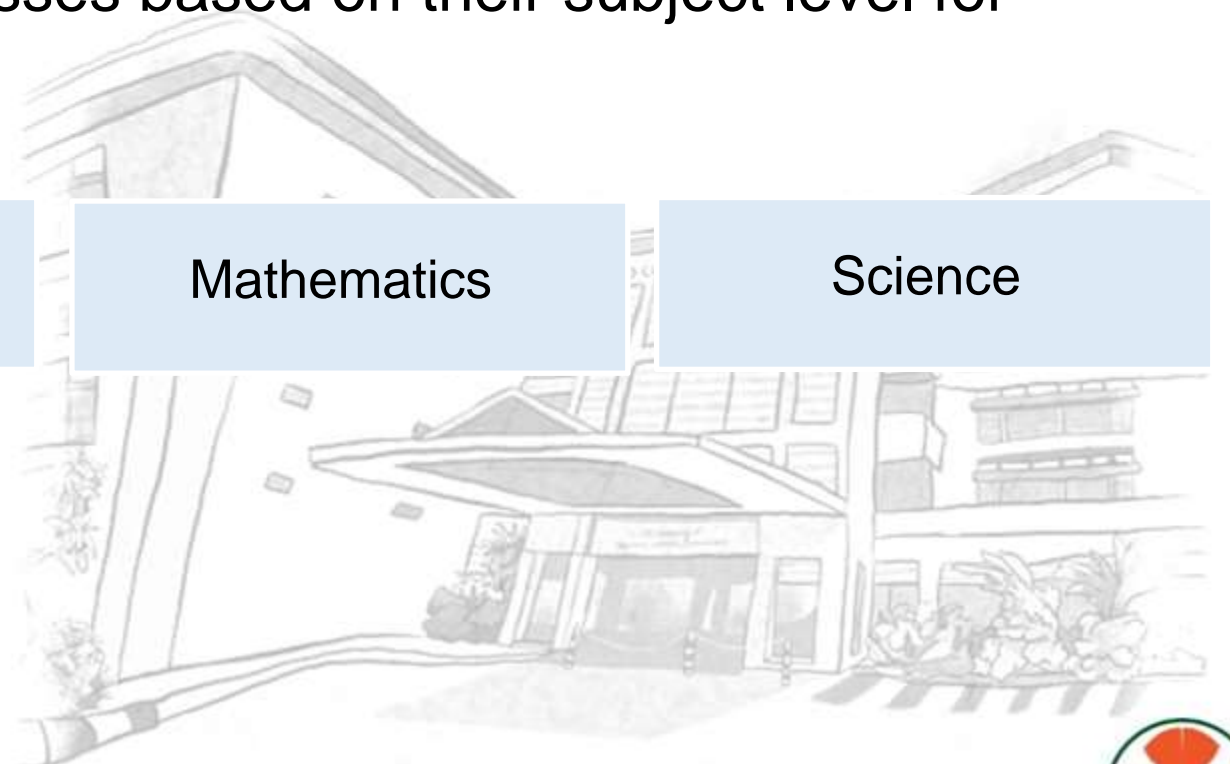
Students will be grouped in different classes based on their subject level for each subject.

English Language

Mother Tongue
Languages

Mathematics

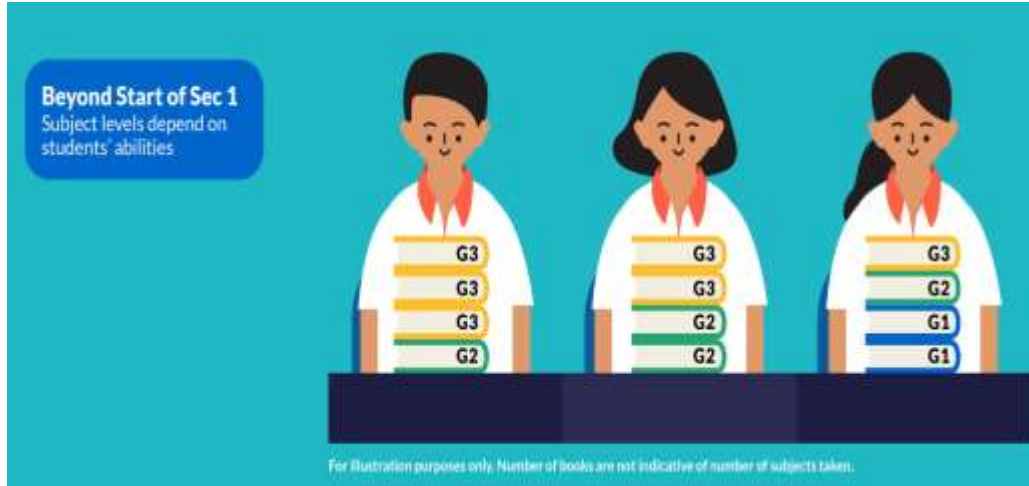
Science



Eligibility to take subjects at a more demanding level

Beyond Start Of Secondary 1
(Mid Year & End of Year)

For EL, MTL, MA and SCI



Current Subject Level	School-based Results	Option to offer subject starting from the next semester
G1	$\geq 75\%$ in the specific subject	G2
G2	$\geq 75\%$ in the specific subject	G3



Offering Humanities at a more demanding level

Providing Opportunities for students to study subjects at a level better suited to their strengths and interests.

Students who offer G1 Humanities and G2 Humanities in S1 may offer **Geography** at a more demanding level if they meet the subject-specific criteria by the end of their Sec 1 year.



Offering Humanities at a more demanding level

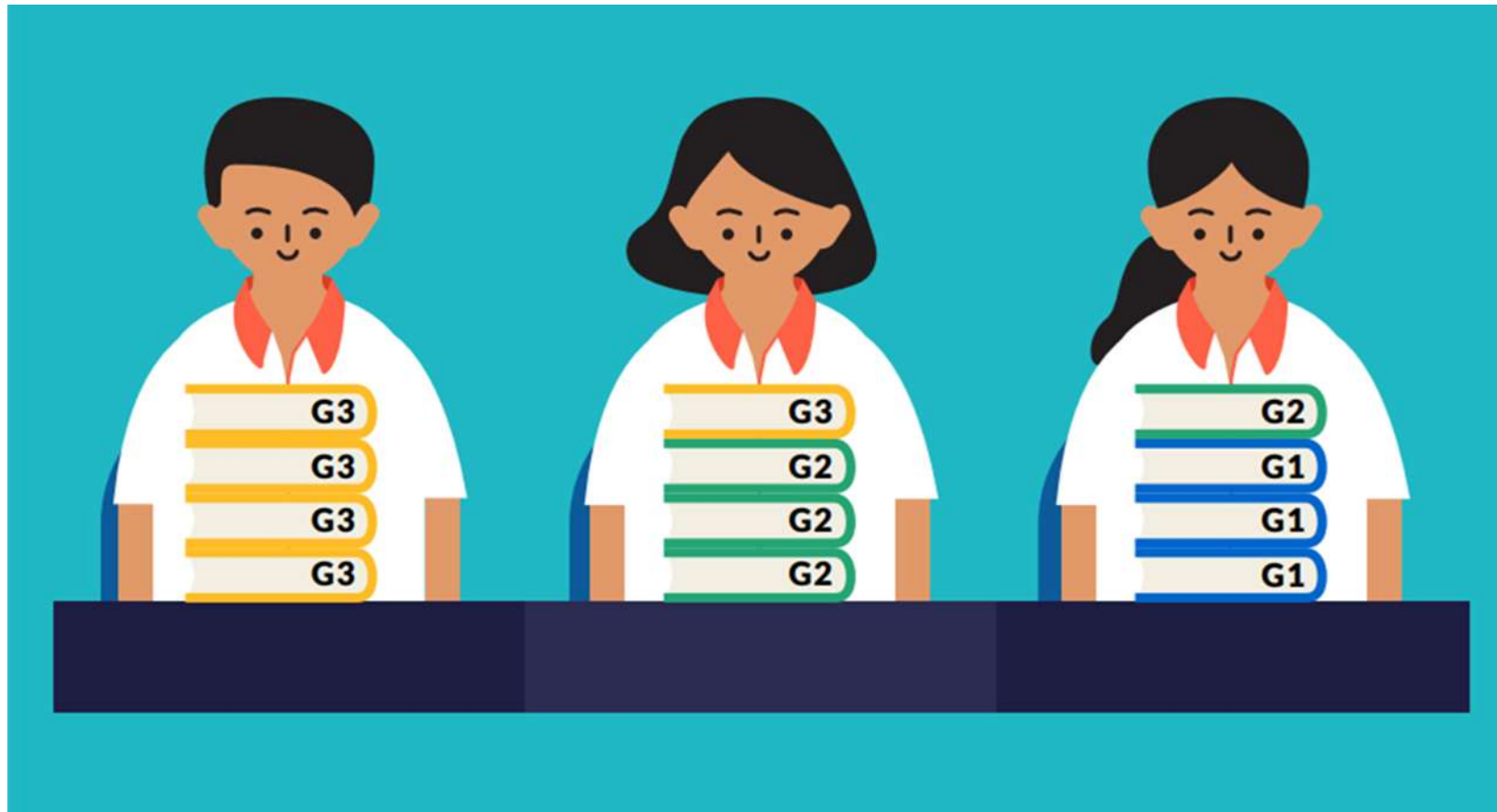
Students who offer G1 Humanities and G2 Humanities in S1 can offer Geography at a more demanding level **from beginning of Sec 2.**

	Geography at G3	Geography at G2
Criteria	75% or higher in Geography	<ul style="list-style-type: none">• $\geq 75\%$ for English Language at G1 Level at the End of Year Examinations; and• A Distinction grade for both G1 SS Performance Tasks in Semesters 1 and 2



Full Subject-Based Banding (Full SBB)

We are moving towards One Secondary Education, with many subject bands, to better meet our students' learning needs.



Overview of Secondary Education

Student Development & Support

Mr David Goh

HOD Student Management



Student Development & Well-being

- Students demonstrate School **GROWTH** values and Social Emotional competencies.
- Students demonstrate **resilience** of body and mind.
- Students demonstrate commitment to pursue their **interests and passions**.
- Students are confident **leaders** of self and others.
- Students are **concerned citizens** with the will to act for the greater good.
- Students demonstrate a **safety mindset** culture.



Student Development Team



Teachers never cease to learn and motivate; Leaders never cease to care and inspire

Mrs Betty Chow
Principal



Like small seeds that grow into strong trees, every student is capable of greatness when we inspire them to love learning.

Ms S G Sarah Abdullah
Vice Principal



To help every child blossom and grow by nurturing their minds, moulding their character, and growing their interests and talents.

Ms Cho Ling Ling
Kelly
Year Head (L5)

Every student has the potential and capacity to grow and develop to conquer the different peaks of excellence in life.

Mr Mak Boon Foong
Year Head (US)



Ignite. Excite. Unite.
Mdm Ng Hui Yin
SH/Discipline



Let every child we teach be our Magnum Opus, for the future of the world is in our classroom today.

Mr Lim Hock Chye
Kevin
Vice Principal



Each child is unique, not only capable of learning but also capable of succeeding.

Mr Goh Chye Peng
David
HOD/Student Mgmt



I teach to enable, enliven and encourage.

Mr Muhd Redzuan
HOD/Educational Support

To help students discover the world around them and the potential they have in themselves.

Ms Sin Puay San
HOD/CCE



Effort trumps talent. As long as one is determined to try his or her best, that's already more than half the battle won.

Ms Lim Beiyi
Michelle
SH/Student Leadership & Student Well-Being



Student Development Team Plus

Ms Poh Shee Yean
Senior Allied Educator
(Counsellor)



Ms Carmelia
Trecia Arriola
Lead Allied Educator
Lead Special
Educational
Needs (SEN)
Officer



Mr Chow Won How
Clo
Student Welfare Officer



Mr Koh Kwek Choang
Allied Educator
(Counsellor)



Nur Hidayah Binte
M Saharudin
Special Educational
Needs (SEN) Officer



Mr Peh Yam Kim
Special Educational
Needs (SEN) Officer



Student Development Experiences

Some examples of activities

- Orientation Programme
- Level Programme (Discovery)
- Networked for Teaching Entrepreneurship(NFTE)
- The Catalyst & After-school Engagement
- Youth Leadership Development Course
- Sports Carnival
- Active Learning Week
- Service Learning
- Values in Action
- Chit Chat Sessions



Discipline

• Attendance

- All students must attend lessons, CCAs, school events and activities regularly and punctually.
- Absence from school, lessons, CCAs, any activities planned by the school without leave or valid reason is considered truancy. Prompt submission of document to support the absence is critical.

• Punctuality

- Maximise curriculum time
- Time management
- Cultivating a good habit of being punctual **(Report to school by 7:55am)**



Use of Mobile Devices

- Mobile devices must be switched off and kept away during curriculum hours. ALL students **must lock their mobile devices in the lockers** provided. The mobile devices must remain locked in the lockers provided during curriculum hours (including lunch break), unless otherwise instructed by teachers.
- **After curriculum hours**, students can use mobile devices only in the foyer (outside General Office) and canteen.
- Students who urgently need to contact parents can use the phone in the General Office. Parents can contact their children through at **6456 0669** during office hours.



School Attire

*Sec 1
Discovery

Sec 2
Synergy

PE
T-shirt

Sec 3
Resilience

Sec
4&5
Future



Official (Closed) / Non-Sensitive



School Attire

- Full school uniform on Tuesday Morning for Assembly.
- PE attire or half uniform on all other days.
- Alternate Fri (non HBL day) - Level Tee.
- Cardigans/ Sweaters must not be worn except in air-conditioned rooms. Students who are feeling unwell should rest in the Sick Bay.



Overview of Secondary Education

Assessment Policy

Ms Kelly Cho

Year Head (Lower Sec)



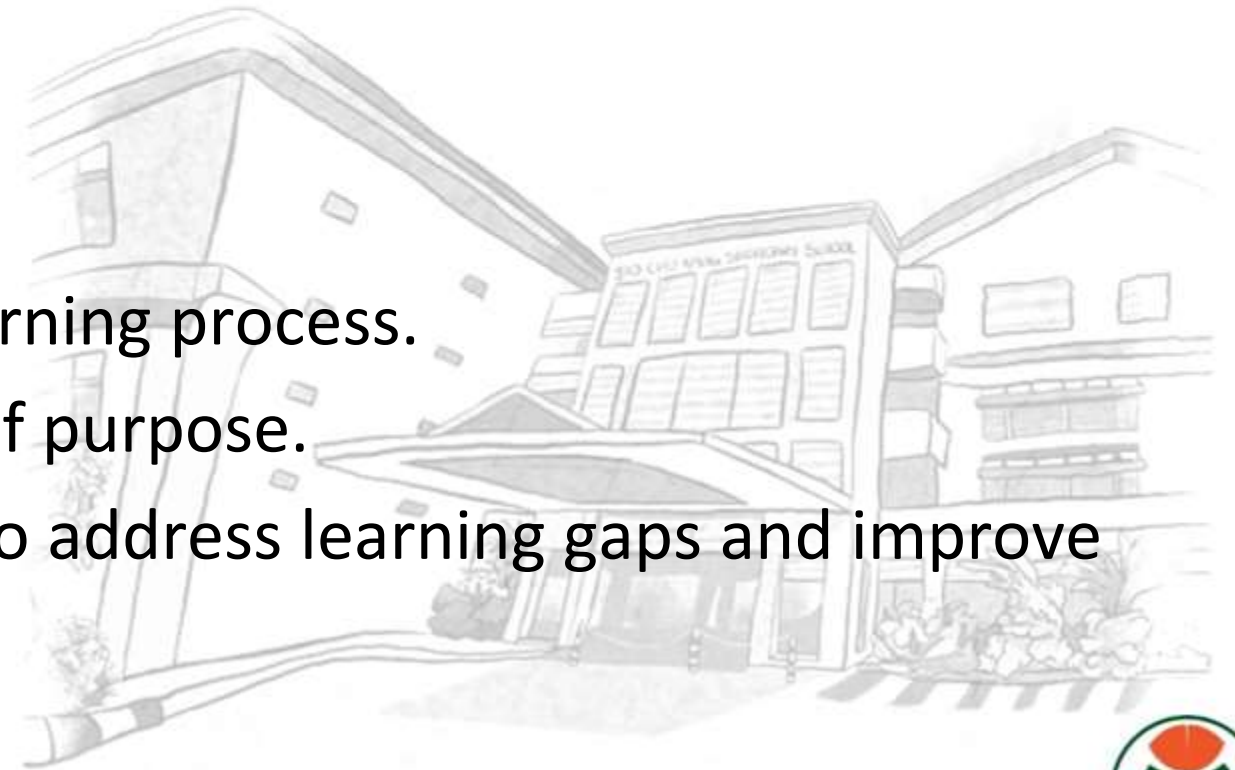
YCKSS Assessment Policy

Vision

A learner-centred and balanced assessment system that supports quality teaching and learning.

Philosophy

1. Assessment is integral to the learning process.
2. Assessment begins with clarity of purpose.
3. Assessment provides feedback to address learning gaps and improve teaching practices.



A Balanced Assessment System

Assessment for Learning

- On-going feedback given to student in class or through marked assignments

Assessment for Learning
(AfL)

Examples

- in-class questioning
- learning tasks embedded in lesson activities
- homework assignments

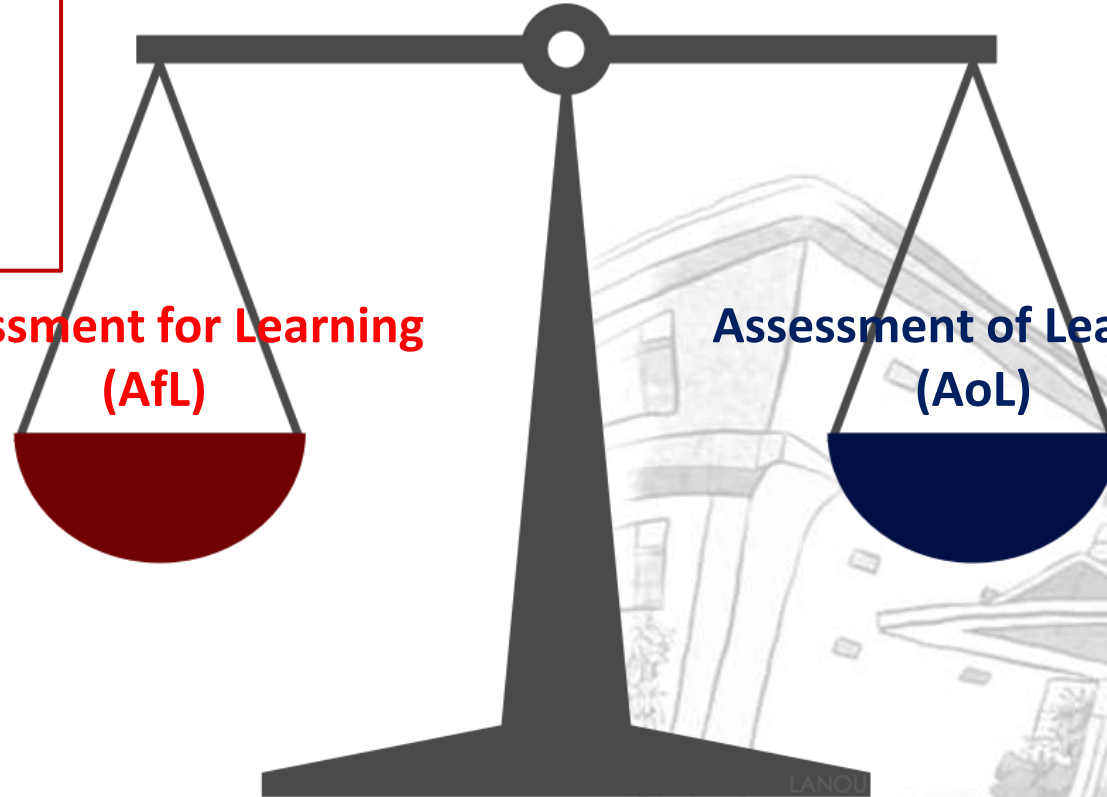
Assessment of Learning

- Formal assessments to assess students' understanding or skills of the subject.

Assessment of Learning
(AoL)

Examples

- Weighted Assessments
- End-of-Year Examination



Assessment Structure

	Term 1	Term 2	Term 3	Term 4
Duration	T1W6 to W10 05 Feb to 6 Mar	T2W6 to W10 24 Apr to 21 May	T3W6 to W9 29 Jul to 23 Aug	T4W3 to W5 27 Sep to 10 Oct
Assessment	Weighted Assessment	Weighted Assessment	Weighted Assessment	End -of-Year Exam
Sec 1	15%	15%	15%	55%

Learning Support

Learning Support provided by the school includes:

- ❑ Small-group remedial on a need's basis
- ❑ Consultation with Subject Teachers
- ❑ Self-directed learning via Student Learning Space (SLS)
- ❑ 3 SEN officers to support students with special needs
- ❑ 2 School Counsellors and 1 Education & Career Guidance (ECG) Counselling Manager to provide counselling on motivation and ECG matters



Overview of Secondary Education

Applied Learning Programme
Learning for Life Programme
Sec 1 Outdoor Adventure Learning Camp

Ms Kelly Cho

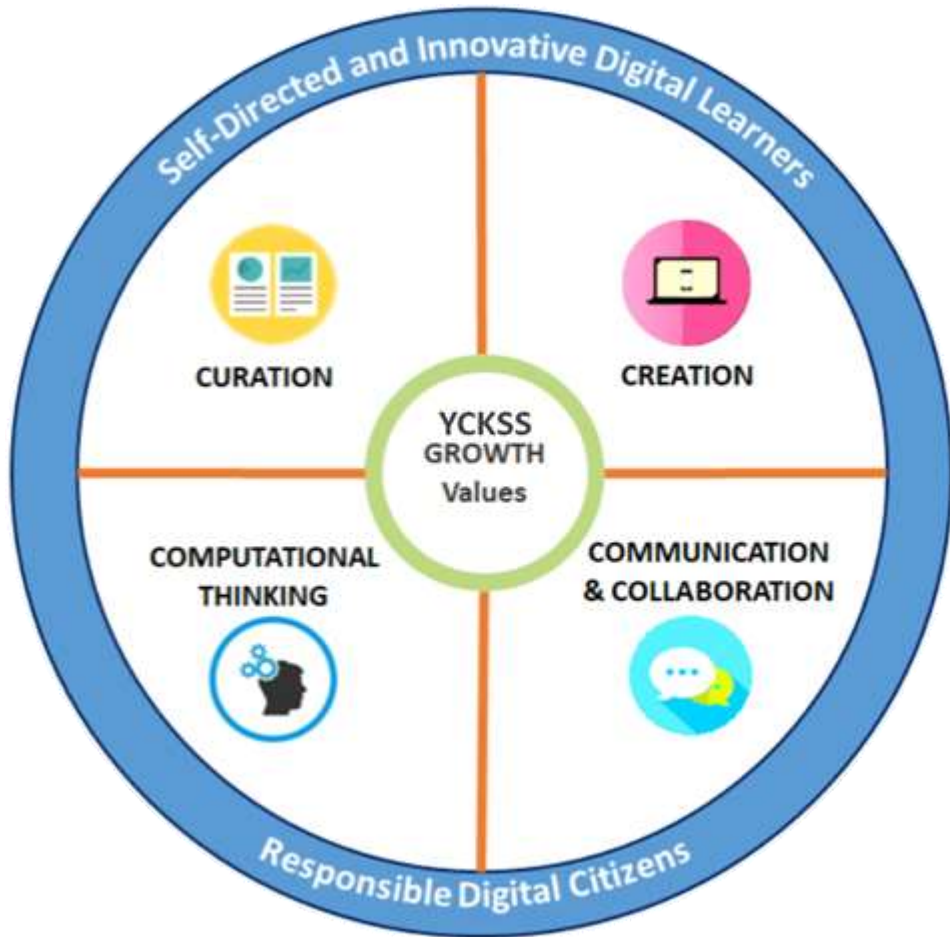
Year Head (Lower Sec)



Distinctive Programme (ALP)

Applied Learning Programme

- Science, Technology, Engineering & Mathematics (STEM)



Sec 1

Exposure

At the end of each topic, students will perform a challenge to enable them to apply their learning of the following:

- * Basic coding logic using SMART AI World Kit (with Micro:bit)
- * Solve real-life problems using creative technology ideas
- * Digital tools using PLD

Sec 2

Experience

Students will experience three different modules that enable them to apply the Design Thinking methodology using emerging technologies in:

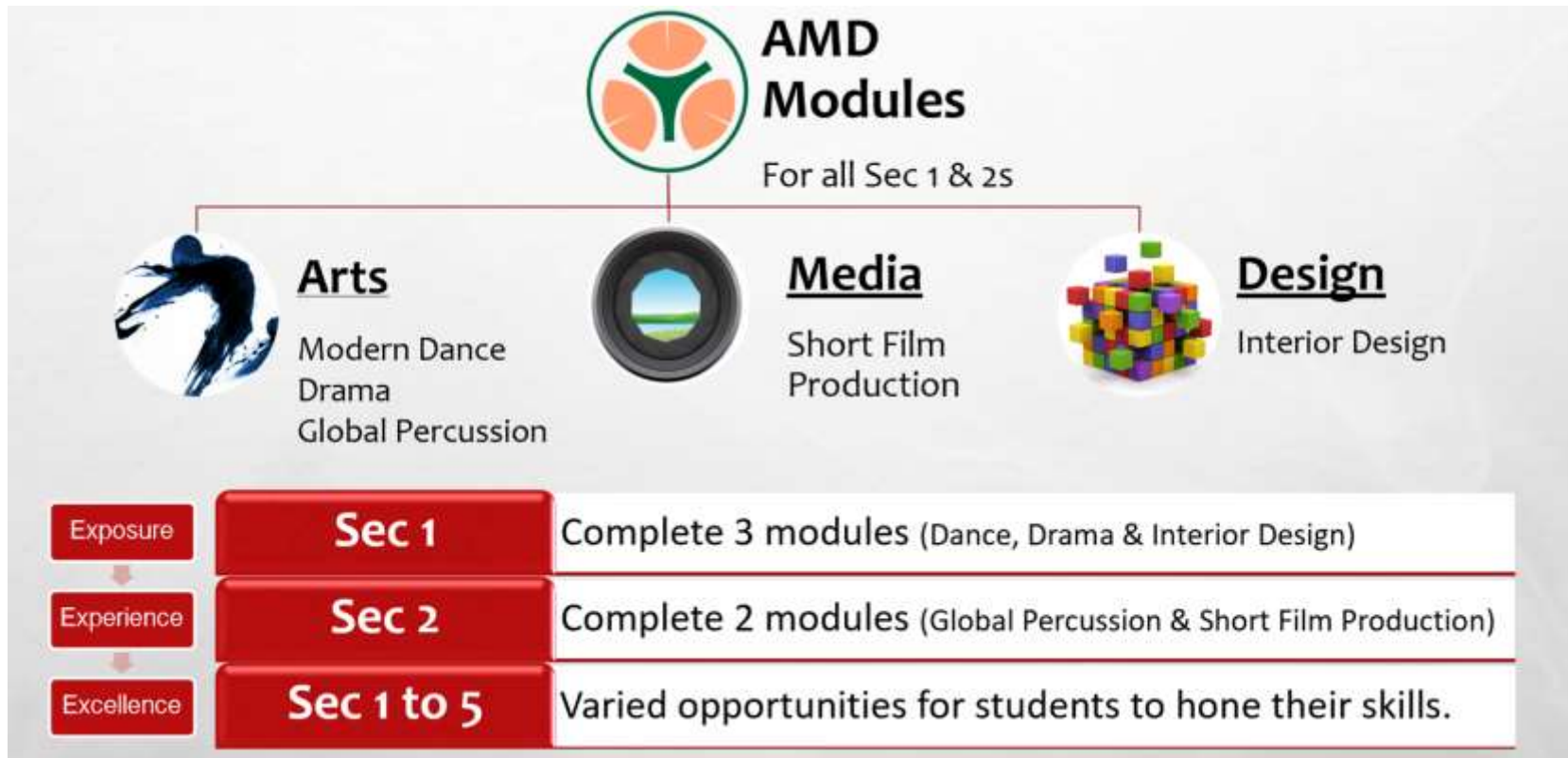
- * 3D Modelling & Printing
- * Drone Programming
- * Mobile Apps Development



Distinctive Programme (LLP)

Learning for Life Programme

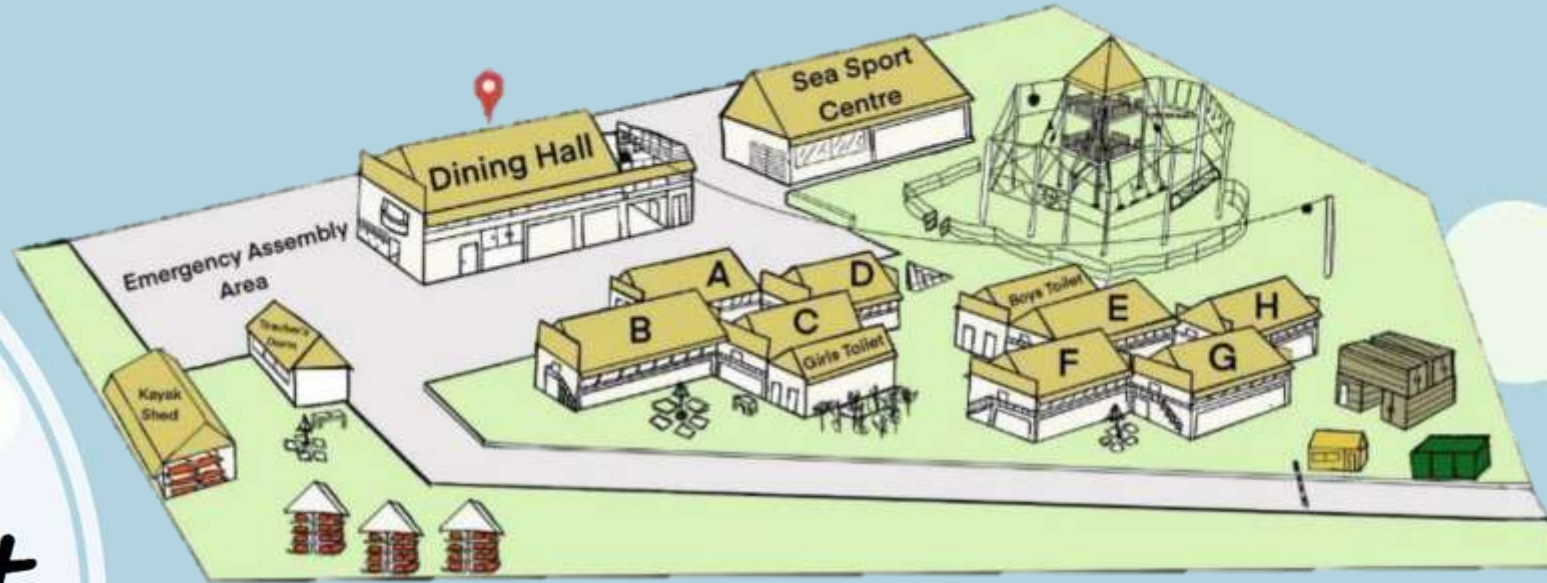
Arts, Media & Design (AMD)





Cohort Camp at
Changi Coast
Outdoor Adventure
Learning Centre

15 – 18 April 2024



Providing Holistic Education

- MOE aims to have every child experience a holistic education so as to **develop well-rounded individuals.**
- Outdoor Education (OE) provides **rich learning experiences** outside the classroom that can help our students develop **resilience and ruggedness.**
- **Authentic learning experiences** help our students **develop 21st century competencies** as well as competencies for **sustainable active and healthy living.**



During Camp

Explore & Experience



INITIATE



BUILD



CHALLENGE



CONSOLIDATE
& CELEBRATE

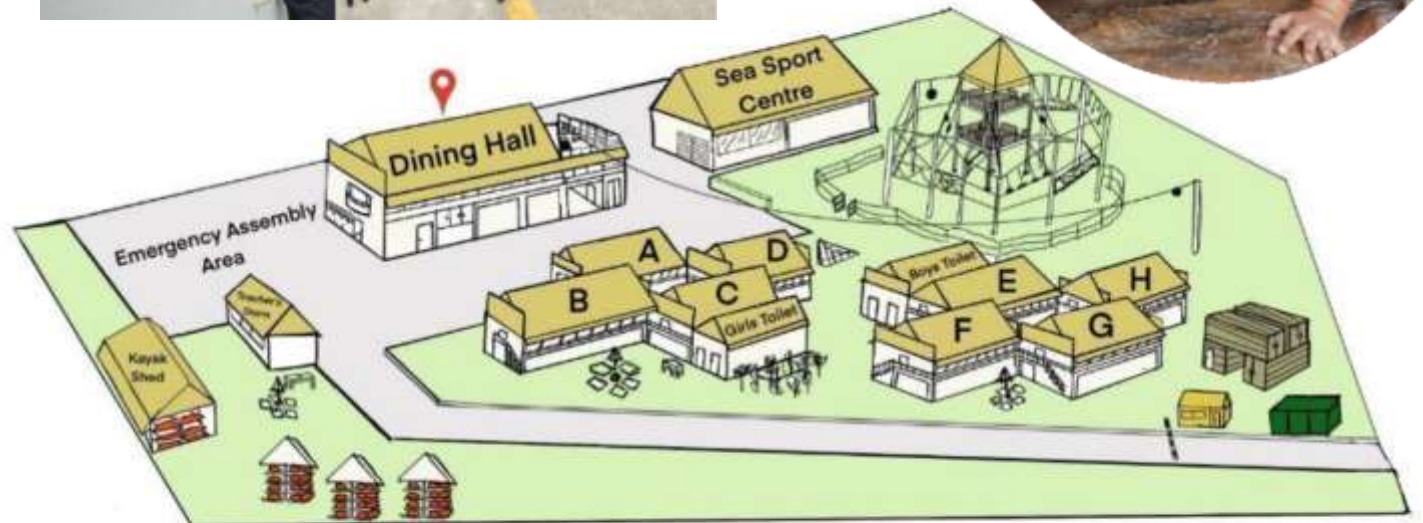
ACTIVITIES

- Ice-breakers
- Full Value Contract
- Goal Setting
- Low Elements
- High Elements
(only 5 groups)
- Team Building Games
- Inter-group challenges
- Journey
- Outdoor Cooking
- Navigation
- Shelter Building
- Artificial Caving
- Place Based Activities
- Night Consolidation
- Kayaking
(only 4 groups)

FACILITIES

Adventure Facilities

- High Elements
 - 2-tiered Challenge Ropes Course
 - 5 groups – 100 pax**
 - Abseil (2 lanes)
 - Outdoor Rock Climbing Wall
 - Indoor Rock Climbing Wall
- Low Elements **For all**
- Artificial Caving **For all**
- Kayaking (open-decked)
4 groups – 80 pax



All Costs Fully Paid by the School



**Camp
booklets**
(to be prepared
by school)



**Camp
apparels e.g.
T-shirts / buff**
(to be arranged by
school)



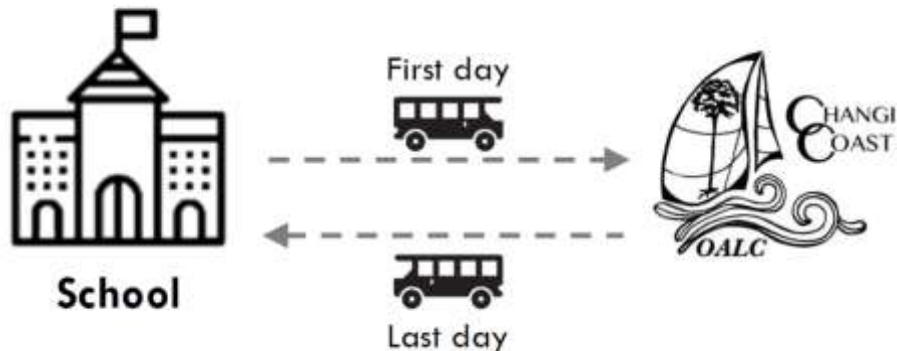
**Rental of
equipment***
(e.g. bicycles,
dragon boats)

**not provided by OALC*



**Hiring of
external
instructors^**
(e.g. dragon boat
instructors)

^ for activities not run by OAEs



Breakfast
\$3 per pax per meal

Lunch / Dinner
\$5 per pax per meal

PACKING LIST FOR 4D3N OUTDOOR ADVENTURE CAMP

A. COMPULSORY ITEMS		QUANTITY
1.	Haversack / backpack (no trolley bag / sling bag)	1
2.	Day pack (to carry items needed in the day)	1
3.	Non-disposable water bottle (at least 500 ml; preferably 1 litre)	1
4.	Thermometer	1
5.	Raincoat / waterproof jacket with hood / poncho (preferably NO disposables)	1
6.	Cap / hat for sun protection	1
7.	Ear plugs	1 pair
8.	Bandana / headscarf / buff (for use with helmets during high elements/caving)	1 (Provided by school)
9.	Spectacles (spare) and spectacle band/hook (for water activities)	1
10.	Pen (for reflection in the camp booklet if applicable)	1
11.	Fork, spoon, lunchbox (for meals and outdoor cooking) (strictly NO disposables)	1 set
B. IMPORTANT ITEMS		
12.	Day 1 – Red Level T-Shirt (Wear to School) Day 2 – PE T-Shirt Day 3 – PE T-Shirt Day 3 – Camp T-Shirt	4
13.	Comfortable long sleeve shirt and long pants for sleepwear	1 set
14.	Shorts (not including the set worn on the first day)	3
15.	Dark colored top (Students' Own) + shorts / long pants for Kayaking	1 set
16.	Long track pants (for journey, kayaking and low elements)	1 (Student's own) 1 (Provided by school)
17.	2 pairs of covered shoes (For students in the high elements group) OR 1 pair of covered shoes and preferably 1 pair of water booties / normal covered shoes (For students in the water activities group) (Shoes will get dirtied so avoid wearing brand new or white shoes)	2 pairs
18.	Socks (not including the set worn on the first day)	3 – 4 pairs
19.	Undergarments	4
20.	Towel (washing of face & bathing)	1
21.	Personal medication (including inhalers and spare canisters)	
22.	Toiletries (i.e. tooth-brush, tooth-paste, bodywash, shampoo, body powder, toilet paper (not provided), sanitary napkins (for ladies))	
23.	Sleeping bag / mat	1
24.	Slippers (to be worn only during bathing time)	1
25.	Plastic bags for dirty clothes	4
26.	Sun protection e.g. dri-fit long sleeve shirt, sun-block SPF50, lip balm, sunglasses with spectacle band.	
27.	Insect repellent / plasters and ointment for insect bites	
C. ITEMS THAT ARE GOOD TO HAVE		Optional
28.	Sweater / jacket (for night)	1
29.	Inflatable camping pillow	1
30.	Ziploc bags for waterproofing items in backpack	2
31.	Torchlight with spare batteries	1
32.	Wet wipes	1

Packing List

Given via Parents Gateway

1 set of T-shirt, track pants & head buff will be provided by school

Outdoor Apparel Provided by the School



Front design



Back design



- Head Buff
- Camp T-Shirt
- Black Track Pants



QD 62

100% Polyester Interlock
Weight: 150g/m²

SIZE	SHOULDER	CHEST	SLEEVE	LENGTH
XS	16"	36"	7.5"	26"
S	17"	38"	8"	27"
M	18"	40"	8.5"	28"
L	19"	42"	9"	29"
XL	20"	44"	9.5"	30"
2XL	21"	46"	10"	31"
3XL	22"	48"	10.5"	32"



Pants size guide

Size	No.	Length	Waist
XXXS	- 32 -	29.5	21 - 35 inch
XXS	- 34 -	32.2	24 - 40 inch
XS	- 36 -	34.2	26 - 42 inch
Small	- 38 -	35	26 - 45 inch
Medium	- 40 -	35.4	28 - 48 inch
Large	- 42 -	37	30 - 51 inch

Measurements are in inches

Outdoor Adventure Accessories for Purchase

- Parents may order items online. Hardcopy of the order list will be given to each student.
- Delivery to school in April.
- Students may purchase items during recess and after school when the supplier is in school.

ADVENTURE WORLD
 Where your Adventure begins...
 65 Ubi Crescent, #05-03
 Hola Centre, S408559
www.adventure-world.com.sg
 Tel: 6100 0227

Sales at

Date of Sale:

Time of Sale:


Name:

Class:



You can order online too!

Items	Price
 Hollow Fibre Sleeping Bag	\$12.90
 Inflatable Camping Pillow	\$3.50
 Reusable Poncho	\$3.50
 Dual Purpose Torchlight Batteries included	\$9.90
 Keychain Light	\$3.90
 Quick Dry Microfibre Gym Towel (40cm x 80cm)	\$6.50
 Quick Dry Microfibre Bath Towel (130cm x 75cm)	\$14.50
 Ziplock Bag (1 set of M, L, XL)	\$1.50
 Tiger Balm Insect Repellent Patch (1box of 10pcs)	\$7.30
 Zappy Insect Repellent Wipes (1 pack of 5pcs)	\$2.00
 Toiletries Pack (Shampoo, Body Wash, Oral Care, Wet Wipes)	\$6.90
 Sun Protection SPF 50	\$18.00
 Foldable Fork & Spoon Set with pouch	\$4.50
 Foldable Cup with Cover (300ml)	\$6.90
 Foldable Lunchbox with spork	\$12.90
 Armsleeve	\$8.00
 Dri-Fit Long Sleeve Shirt	\$12.90

Items	Price																		
 10L Waterproof Dry Bag (For keeping essentials items dry during outdoor/water activities)	\$12.90																		
 Daypack with Zip Pocket & Netting Pouch	\$2.50																		
 Shoebag with compartment	\$5.00																		
 1L BPA Free Tritan Material Water Bottle	\$10.90																		
 6 Inch Lightstick	\$1.00																		
 Carribena	\$0.80																		
 Spectacle Band	\$3.00																		
 45L + 5L (extension) Backpack with raincover	\$59.90																		
 <table border="1" style="display: inline-table; vertical-align: middle;"> <thead> <tr> <th>Size</th> <th>Chest</th> </tr> </thead> <tbody> <tr><td>140</td><td>36"</td></tr> <tr><td>160</td><td>40"</td></tr> <tr><td>180</td><td>44"</td></tr> <tr><td>200</td><td>48"</td></tr> <tr><td>220</td><td>51"</td></tr> </tbody> </table> Foldable Windbreaker	Size	Chest	140	36"	160	40"	180	44"	200	48"	220	51"	\$19.90						
Size	Chest																		
140	36"																		
160	40"																		
180	44"																		
200	48"																		
220	51"																		
 <table border="1" style="display: inline-table; vertical-align: middle;"> <thead> <tr> <th>Size</th> <th>Length</th> </tr> </thead> <tbody> <tr><td>34</td><td>34"</td></tr> <tr><td>36</td><td>35"</td></tr> <tr><td>38</td><td>37"</td></tr> <tr><td>40</td><td>39"</td></tr> <tr><td>42</td><td>41"</td></tr> <tr><td>44</td><td>43"</td></tr> </tbody> </table> Trackpants	Size	Length	34	34"	36	35"	38	37"	40	39"	42	41"	44	43"	\$10.90				
Size	Length																		
34	34"																		
36	35"																		
38	37"																		
40	39"																		
42	41"																		
44	43"																		
 Tube Bandana	\$4.00																		
 Waterproof Sticker Labels 1 set of 15pcs	\$1.00																		
 Mess Tins (1 set 2pcs)	\$6.00																		
 Solid Fuels (1pack 8pcs)	\$2.00																		
 <table border="1" style="display: inline-table; vertical-align: middle;"> <thead> <tr> <th>US</th> <th>5</th> <th>6</th> <th>7</th> <th>8</th> <th>9</th> <th>10</th> <th>11</th> <th>12</th> </tr> </thead> <tbody> <tr> <td>Europe</td> <td>36</td> <td>39</td> <td>40</td> <td>41</td> <td>42</td> <td>43</td> <td>44</td> <td>45</td> </tr> </tbody> </table> Water Booties	US	5	6	7	8	9	10	11	12	Europe	36	39	40	41	42	43	44	45	\$24.00
US	5	6	7	8	9	10	11	12											
Europe	36	39	40	41	42	43	44	45											

Special Considerations:

- If your child needs to be exempted from the camp, please indicate in the consent form the medical reasons. The Year Head will contact you for more details.
- Students who are not attending the camp will stay at home to do self-study.
- No outdoor apparels will be given to students who are exempted



For Parents' Follow up Actions

1. Check Parents Gateway by **26 Feb** for Letter to Parents

2. Indicate by **2 March**:

- Medical Records (e.g. asthma, food allergies, sleepwalking etc.)
- Preference for High Elements or Kayaking
- Dietary options (Halal or Vegetarian)
- T-shirt Size & Track Pants Size



3. Refer to packing list (in Parents Gateway) to purchase necessary items e.g. Sleeping Bag, insect repellent, sunblock etc. Encourage your child to pack his/her own bags and learn to be independent and responsible.

Parents Engagement

- Connect stronger with your child by staying connected to the school.
- Connect with other parents to forge friendship and share experiences.



Parents Engagement

- School Concerts
- Speech and Prize-Giving Day
- Student Leaders' Investiture
- Sports Carnival
- Staff Appreciation Day
- Graduation Ceremony



Parents at the annual Sports Carnival



Parents Engagement

- Join us to **Have a Chat with the Principal (Face to Face)**

Theme	Date and Time
Future Ready Learners	8 March 2024 (Fri), 5.00 pm – 6.30 pm
Joy of Learning	28 June 2024 (Fri), 5.00 pm – 6.30 pm



Parents Engagement

- Join us to **Have a Chat with HODs (via Zoom)**

Topics	Date and Time
ECG – What happens after Secondary School	5 April 2024 (Fri), 4.00 pm – 5.30 pm
Digital Education and Cyber Wellness	17 May 2024 (Fri), 4.00 pm – 5.30 pm
Mental Health and Wellness	12 July 2024 (Fri), 4.00 pm – 5.30 pm



Parents Engagement

Let's get
connected



<https://go.gov.sg/parentsconnect>



(Closed) / Non-Sensitive



Parents Engagement

- Join us in the Cyberspace!



<https://yiochukangsec.moe.edu.sg>

Official (Closed) / Non-Sensitive



Parents Engagement

Join us in the Cyberspace!



@yiochukangsec



@yoloyio



Yio Chu Kang Secondary School
Official Channel

Official (Closed) / Non-Sensitive



Parents Engagement

- Join us in the Cyberspace!

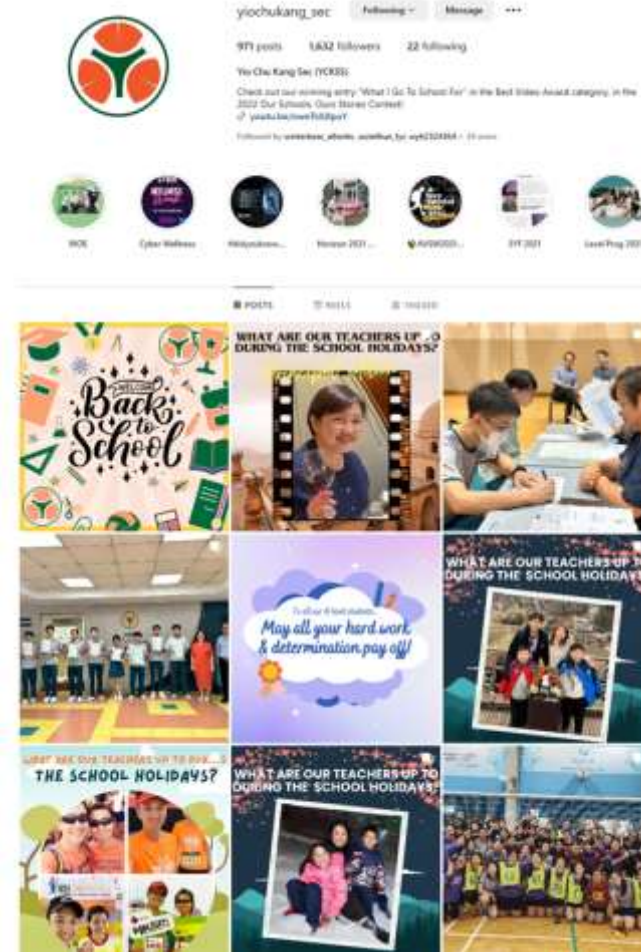


Parents Engagement

- Join us in the Cyberspace!



FOLLOW US NOW!



Parents Engagement

- Join us in the Cyberspace!



SUBSCRIBE NOW!



Yio Chu Kang Secondary School Official Channel

@yiochukangsecondaryschool0342 · 498 subscribers · 90 videos

More about this channel >

Subscribe

Home Videos Live Community

Latest Popular Oldest



YCKSS Cantabile 2023 (Full Concert)
54k views · 1 month ago



YCKSS Cantabile 2023 (Highlights)
231 views · 1 month ago



YCKSS NDP Journey 2023 (Part 2)
89 views · 1 month ago



The Graduation Gift
432 views · 1 month ago



Singapore Schools CyberWellness Challenge 2023



Farewell, Mrs Carol Lim



YCKSS NDP Journey 2023 (Part 2)



Teachers' Day 2023



Sharing on CCA

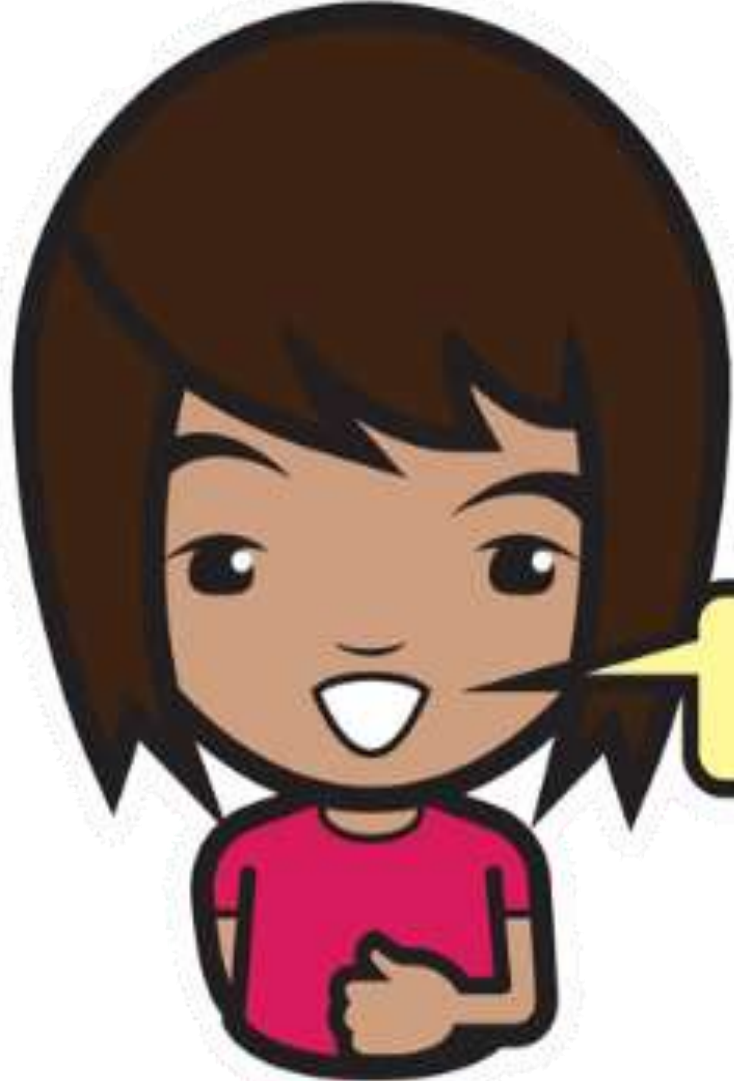
CCA LEAPS 2.0 CCA Policy & Attendance

Ms Irene Heng

HOD PE & CCA



CCA LEAPS



Pay
attention

Your child will be graded
under LEAPS 2.0 System for
CCA.

The levels of attainment
are recognised in
4 domains.

Level of attainment : 1 to 5



CCA LEAPS

Leadership

Enrichment

(no levels of attainment)

Achievement

Participation

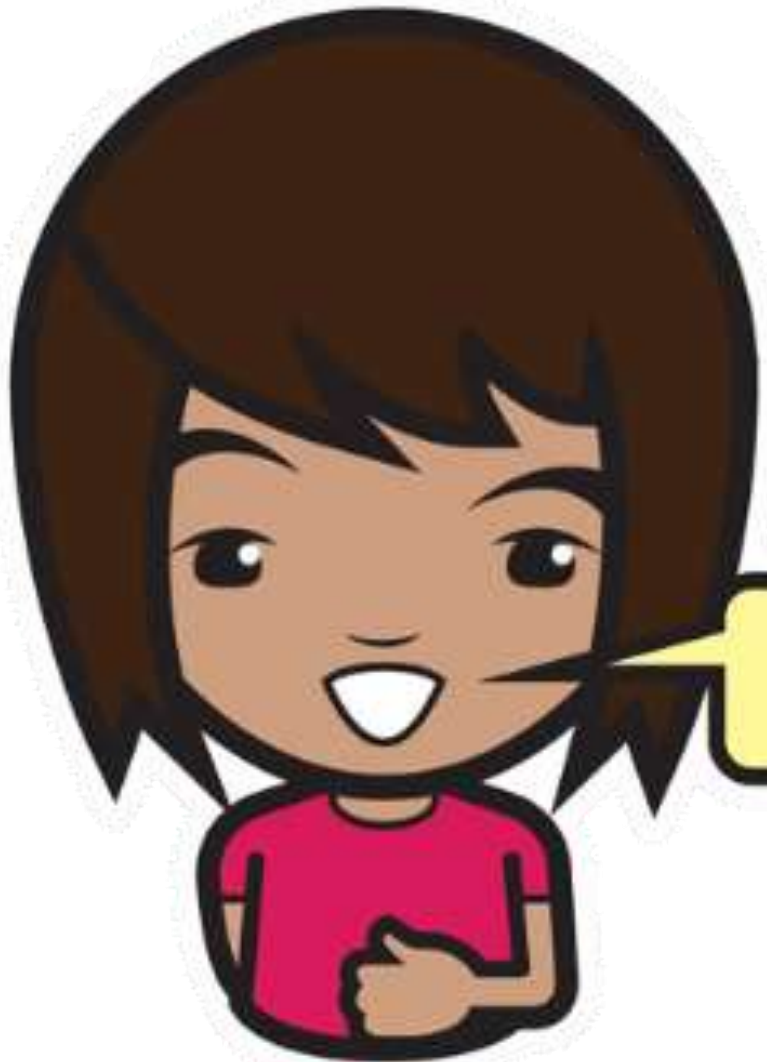
Service

4 Domains
L A P S

Take
Note



CCA LEAPS



Aim for
higher
BONUS

The levels attained
for each domain will
be converted into
bonus points for CCA.



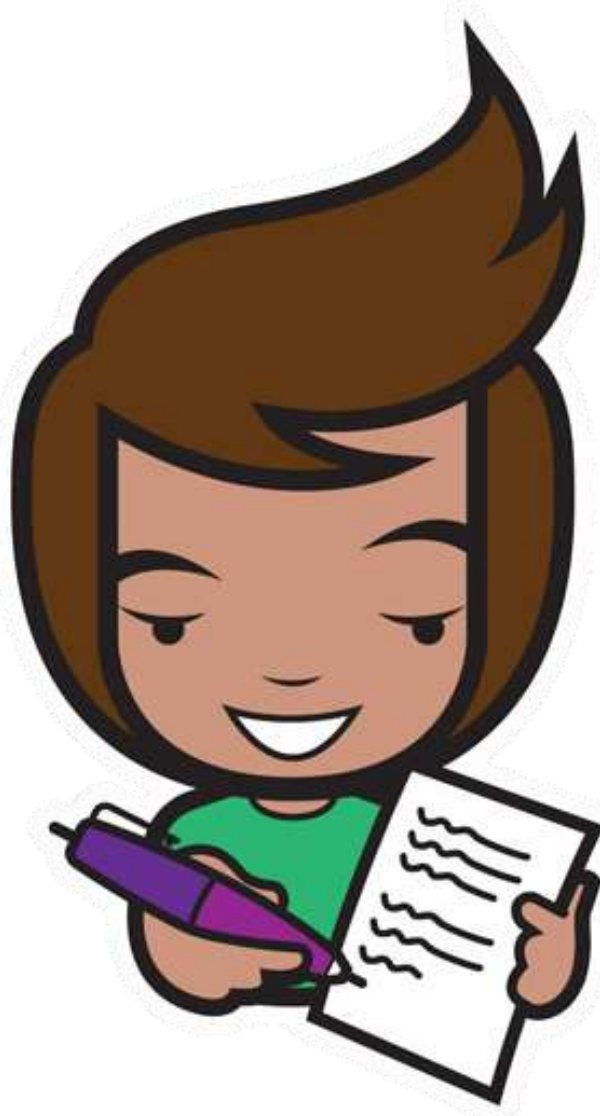
CCA LEAPS

The bonus points can be used for Post Secondary Admission to JC / Poly / ITE.

Condition : Must meet eligibility and minimum entry requirement for the course before CCA bonus point can be applied.



CCA LEAPS



So please take note as the CCA attainment has an impact on your child's future posting to a JC / Poly Diploma / ITE course of his/her choice.



CCA LEAPS 2.0



Leadership position held in Class, CCA and at School Level (e.g. Sports Leaders/Student Council)

Attendance
in CCA
(75% & above)



SERVICE

Representation of **Class, CCA and School** or **Accomplishment in competitions**

VIA hours or projects completed



CCA Grading Scheme LEAPS

- For more information on LEAPS 2.0, please refer to the following website or scan the QR code to view the details:

<https://tinyurl.com/ccaleapsframework>



Participation Domain in LEAPS 2.0

Level 1	Level 2	Level 3	Level 4	Level 5
<ul style="list-style-type: none"> Participated in any CCA for 2 years with at least 75% attendance for each year 	<ul style="list-style-type: none"> Participated in any CCA for 3 years with at least 75% attendance for each year 	<ul style="list-style-type: none"> Participated in any CCA for 4 years with at least 75% attendance for each year 	<ul style="list-style-type: none"> Participated in any CCA for 5 years with at least 75% attendance for each year 	
		<ul style="list-style-type: none"> Participated in any CCA for 3 years with at least 75% attendance for each year and demonstrating exemplary conduct and active contribution 	<ul style="list-style-type: none"> Participated in any CCA for 4 years with at least 75% attendance for each year and demonstrating exemplary conduct and active contribution 	<ul style="list-style-type: none"> Participated in the <u>same</u> CCA for 4 years with at least 75% attendance for each year and demonstrating exemplary conduct and active contribution
			<ul style="list-style-type: none"> Participated in the <u>same</u> CCA for 4 years with at least 75% attendance for each year 	<ul style="list-style-type: none"> Participated in the <u>same</u> CCA for 5 years with at least 75% attendance for each year

Recognition of Co-Curricular

LEAPS 2.0



A Student-Centric, Values-Driven Education

A Broad and Deep Foundation for a Lifelong Journey



Co-Curricular Experience	Basic Requirement for Level of Attainment in Domains (L A P S)	Bonus Points
Excellent	4, 3, 3, 3	2
Good	4, 1, 1, 1 3, 2, 1, 1 2, 2, 2, 1	1
Fair	did not meet above criteria	0

CCA Attainment - Excellent

Domain	Description	Level
Participation	Participated in the SAME CCA for 4 years with at least 75% attendance for each year	4 (exemplary)
Achievement	Represented school at local competition / conference / festival / exhibition for 2 years	3
Leadership	<ul style="list-style-type: none"> • Committee for school-wide events (e.g Sports Carnival, Teachers' Day) • <u>or</u> Class Chairperson (Class Committee) • <u>or</u> Sergeant (Uniformed Groups) 	3
Service	Completed at least 24 hours of service and at least one VIA (e.g. Service Learning) project that impacts the school or community	3

Supporting the Holistic Development of your child

What kind of person does my child want to become?

How can my child learn values and life skills in Co-Curricular Programmes?

*What is my child interested in?
What are his/her strengths?
How far does my child want to challenge himself/herself?*

How can my child pursue this development?

What are the possible opportunities that can help support his/her development?

Is my child coping?

How can my child communicate the kind of support he/she need in his/her learning pursuits?



MOE CCA Policy

- CCA is **COMPULSORY** and student must participate in at least **ONE** CCA.
- Students are strongly advised to fulfill **at least 75% attendance** at the **end of each year**.
- Students should **stay in their CCA** till they graduate in Sec 4/5 to **maximise** their scores for Involvement and Attainment levels.



MOE CCA Policy

- Sec 1 and 2 students can **ONLY** change CCA at the **end of a year**. They are only allowed to change **ONCE** when they are in lower secondary.
- *Note : Change of CCA will have impact on level of attainment in Participation domain.*
- **Uniformed Groups members** are **strictly not allowed** to change CCA unless medical document is produced. UG points (e.g. rank, badge work) **may be lost**.



School CCA Policy

- Students **must inform** the teacher-in-charge when they are **unable to attend a CCA practice or are unwell.**
- They need to **submit medical certificate or relevant document** if they are unwell/absent.
- Student who is absent from his/her CCA **of without valid reason** will be given **zero** in attendance for that session.



CCA Attendance

Level 1	Level 2	Level 3
Tracking Criteria (each semester)		
2 time absent (w/o valid reason)	3 times absent (w/o valid reason)	4 times absent (w/o valid reason)
Actions		
<ul style="list-style-type: none">• A phone call from CCA teacher.• Student will provide a written statement to CCA Teachers.	<ul style="list-style-type: none">• Follow-up phone call from CCA teachers.• Counselling by HOD/SH PE & CCA.• 1 hour of detention after school arranged by HOD/SH Student Management.	<ul style="list-style-type: none">• Follow-up phone call from CCA teachers.• Meeting with parents/guardian by HOD/SH PE & CCA and VP.• Conduct Grade: Fair.

CCA Offered in 2024

YOUR CHOICE. YOUR COMMITMENT. YOUR RESPONSIBILITY.

Physical Sports	Performing Arts	Uniformed Groups	Clubs
<ul style="list-style-type: none">✓ Badminton (Girls)✓ Basketball (Boys)✓ Floorball (Boys)✓ Netball (Girls)	<ul style="list-style-type: none">✓ Choir✓ Concert Band✓ English Drama✓ Chinese Dance✓ Indian Dance✓ Malay Dance	<ul style="list-style-type: none">✓ NPCC✓ Red Cross Youth	<ul style="list-style-type: none">✓ Digital Animation✓ Media – PA, Photography & Videography✓ Mechatronics, Aeronautics & Robotics (MARs)

Physical Sports (Competitive)

Badminton Girls



Basketball Boys



Floorball Boys



Netball Girls



Official (Closed) / Non-Sensitive



The Performing Arts

Choir



Concert Band



English Drama



School Youth Festival Arts Presentations



The Performing Arts

School Youth Festival Arts Presentations

Chinese Dance



Indian Dance

Malay Dance



Uniformed Groups

Red Cross Youth



NPCC



Clubs

Digital Animation



MEDIA CLUB

PA & Audio, Photography & Videography



Clubs

Mechatronics, Aeronautics & Robotics (MARS) Club



Important dates for CCA Orientation and Selection Trials

Date	Event
8 to 18 Jan (2 weeks)	CCA Orientation (Visitation)
22 Jan to 25 Jan	CCA Selection Trials for 1st , 2nd & 3rd Choice
29 Jan to 1 Feb	CCA Selection Trials for 4th , 5th & 6th Choice
5 Feb to 14 Feb	CCA Allocation
15 Feb to 19 Feb	CCA Confirmation
19 Feb	Submission of CCA application form with parent/guardian endorsement to Form teacher

Should you need any advice on CCA matters, please contact:

Personnel	Venue	Extension Number	
<p>Ms Irene Heng HOD PE & CCA</p>	 <p>Ms Heng Siew Hoon Irene PE & CCA (HOD)</p>	<p>HOD Room (Level 1)</p>	<p>116</p>
<p>Ms Nurul Ain SH PE & CCA</p>	 <p>Ms Nurul Ain Bte Kamaldin TEACHER</p>	<p>Staff Room (Level 2)</p>	<p>176</p>



Thank you for your kind attention!


For more information, please browse through our school website

or email us at yckss@moe.edu.sg

Yio Chu Kang Secondary School

3063 Ang Mo Kio Avenue 5 Singapore 569868

Tel: (65) 64560669 **Fax:** (65) 65522927 **Email:** yckss@moe.edu.sg

 yiochukangsec.moe.edu.sg/



facebook.com/yiochukangsec



instagram.com/yoloyio/

